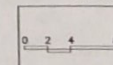


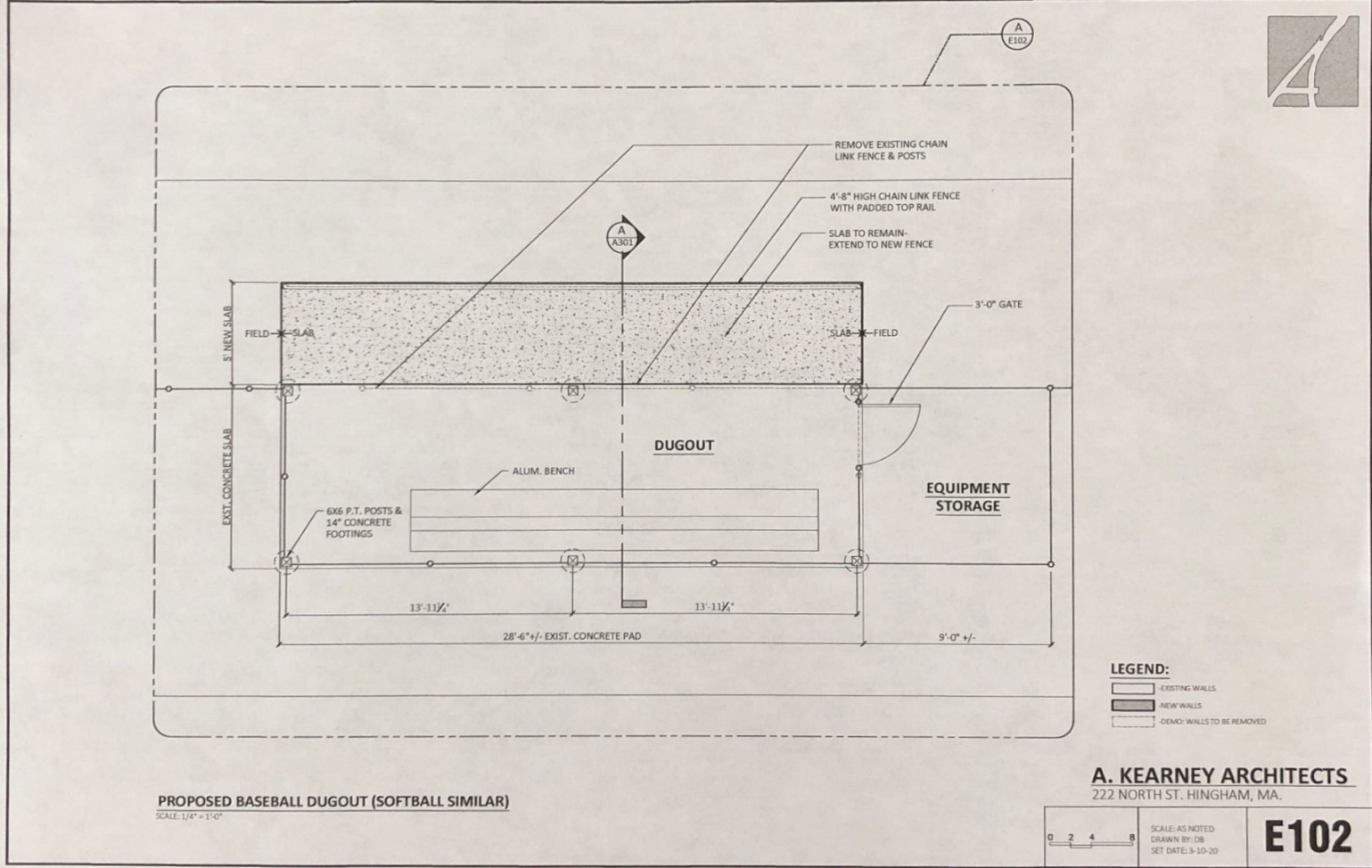
SECTION A: PROPOSED BASEBALL DUGOUT (SOFTBALL SIMILAR)
SCALE: 1/2" = 1'-0"

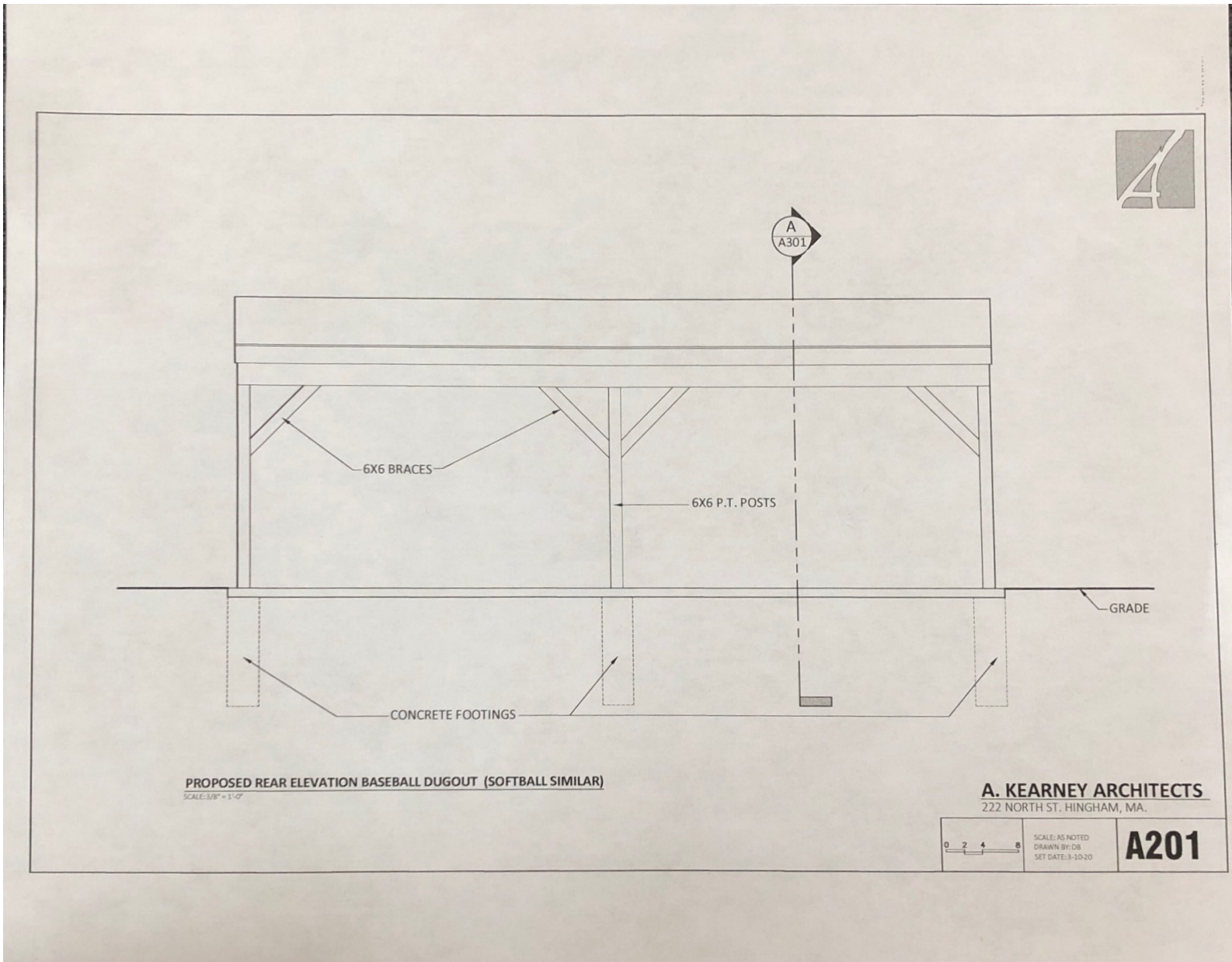
A. KEARNEY ARCHITECTS
222 NORTH ST. HINGHAM, MA.



SCALE: AS NOTED
DRAWN BY: CDR
SET DATE: 9-10-20

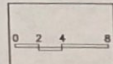
A301





PROPOSED REAR ELEVATION BASEBALL DUGOUT (SOFTBALL SIMILAR)
 SCALE: 3/8" = 1'-0"

A. KEARNEY ARCHITECTS
 222 NORTH ST. HINGHAM, MA.



SCALE: AS NOTED
 DRAWN BY: DB
 SET DATE: 3-10-20

A201