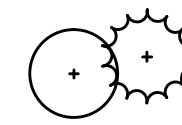
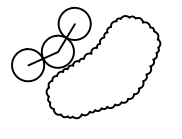

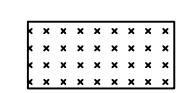


LEGEND

-  PROPOSED TREE
-  SHRUB/PERENNIAL PLANTING, TYP.
-  NO-MOW SEED MIX
-  CONSERVATION SHADE SEED MIX

NO-MOW SEED MIX shall be similar to "No Mow Fescue Mix" as manufactured by Vermont Wildflower Farm, of Hinesburg, VT; or approved equal. Approved equals may be submitted for evaluation, but must meet the following specifications:

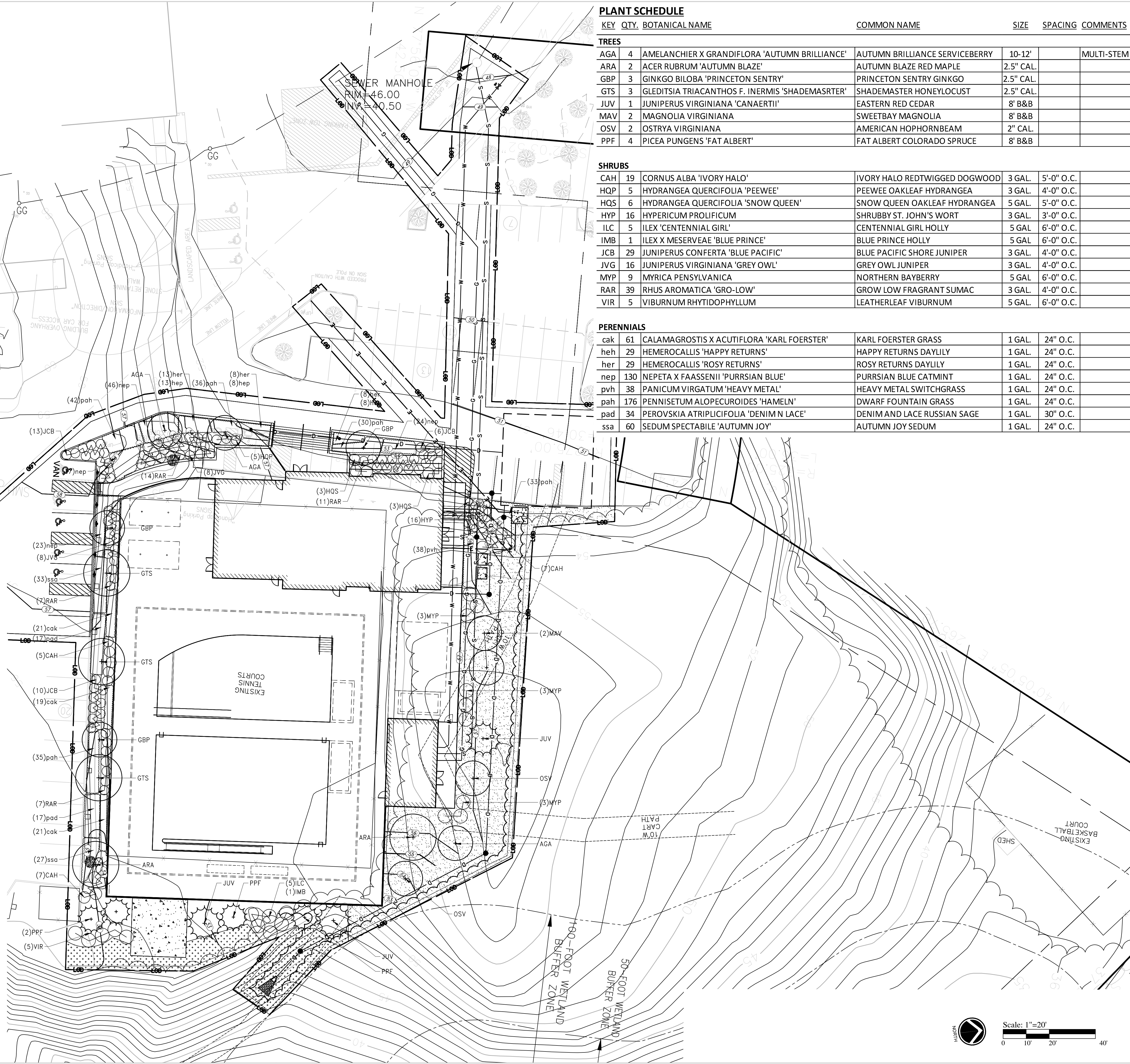
BOTANICAL NAME	COMMON NAME
Festuca rubra	Creeping Red Fescue
Festuca brevipila 'Charlot'	Hard Fescue 'Charlot'
Festuca ovina var. duriuscula 'Heron'	Hard Fescue 'Heron'
Lolium multiflorum	Annual Ryegrass

CONSERVATION SHADE SEED MIX shall be similar to "Conservation Shade Seed Mix" as manufactured by Vermont Wildflower Farm, of Hinesburg, VT; or approved equal. Approved equals may be submitted for evaluation, but must meet the following specifications:

BOTANICAL NAME	COMMON NAME
Festuca rubra	Creeping Red Fescue
Festuca rubra spp. commutata	Chewings Fescue
Lolium multiflorum	Annual Ryegrass
Poa pratensis	Kentucky Bluegrass

PLANTING NOTES:

- IF DISCREPANCIES EXIST BETWEEN THE NUMBER OF PLANTS DRAWN ON THE PLANTING PLAN AND THE NUMBER OF PLANTS IN THE PLANT LIST, THE PLANTING PLAN SHALL GOVERN.
- ALL NEW PLANT MATERIAL SHALL CONFORM TO THE MINIMUM GUIDELINES ESTABLISHED FOR NURSERY STOCK PUBLISHED BY THE AMERICAN ASSOCIATION OF NURSERYMEN, INC. IN ADDITION, ALL NEW PLANT MATERIAL FOR THE PROJECT SHALL BE OF SPECIMEN QUALITY.
- ALL NEW PLANTS TO BE BALLED AND BURLAPPED OR CONTAINER-GROWN, UNLESS OTHERWISE NOTED ON THE PLANT LIST.
- THE CONTRACTOR SHALL SUPPLY ALL NEW PLANT MATERIAL IN QUANTITIES SUFFICIENT TO COMPLETE THE PLANTING SHOWN ON THE DRAWINGS.
- ANY PROPOSED SUBSTITUTIONS OF PLANT SPECIES SHALL BE MADE WITH PLANTS OF EQUIVALENT OVERALL FORM, HEIGHT, BRANCHING HABIT, FLOWER, LEAF, COLOR, FRUIT AND CULTURE, AND ONLY AFTER WRITTEN APPROVAL OF THE LANDSCAPE ARCHITECT.
- ALL NEW PLANTS SHALL BE TAGGED AND APPROVED BY THE LANDSCAPE ARCHITECT AT THE NURSERY PRIOR TO DIGGING OR DELIVERY TO THE SITE.
- CONTRACTOR SHALL LOCATE AND VERIFY ALL EXISTING UTILITY LINES PRIOR TO PLANTING AND SHALL REPORT ANY CONFLICTS TO THE LANDSCAPE ARCHITECT.
- STAKE LOCATION OF ALL PROPOSED PLANTING FOR APPROVAL BY LANDSCAPE ARCHITECT PRIOR TO THE COMMENCEMENT OF PLANTING.
- NEW SHRUBS AND GROUND COVER SHALL BEAR THE SAME RELATIONSHIP TO GRADE AS IT BORE TO PREVIOUS GRADE. TREES SHALL BE SET 3" HIGHER THAN PREVIOUS GRADE. NO TREES SHALL BE PLANTED BEFORE ACCEPTANCE OF ROUGH GRADING.
- ALL PLANT BEDS TO RECEIVE THREE INCHES (3") OF BARK MULCH AS PER SPECIFICATIONS.
- ALL EXISTING TREES TO REMAIN SHALL BE PROPERLY PROTECTED DURING CONSTRUCTION. PROTECTION TECHNIQUES SHALL BE REVIEWED AND APPROVED BY THE LANDSCAPE ARCHITECT. THE PLACEMENT OF PROTECTION DEVICES ADDITIONAL TO THOSE NOTED SHALL, HOWEVER, BE AT THE CONTRACTOR'S DISCRETION.
- CONTRACTOR SHALL PROVIDE FULL DEPTHS OF LOAM AS NOTED ON DETAILS AND AS SPECIFIED, FOR ALL PLANTING.
- CONTRACTOR SHALL COORDINATE LOCATION OF ALL UTILITIES (LINES, DUCTS, CONDUITS, SLEEVES, FOOTINGS, ETC.) WITH LOCATIONS OF PROPOSED LANDSCAPE ELEMENTS (WALLS, FENCE, FOOTINGS, TREE ROOTBALLS, PROPOSED LIGHTING FOOTINGS, ETC.). CONTRACTOR SHALL REPORT ANY DISCREPANCIES TO LANDSCAPE ARCHITECT PRIOR TO CONTINUING WORK.
- CONTRACTOR IS RESPONSIBLE FOR ALL DAMAGE DUE TO OPERATIONS INSIDE AND OUTSIDE OF THE CONTRACT LIMIT LINE. ANY AREAS OUTSIDE THE LIMIT OF WORK THAT ARE DISTURBED SHALL BE RESTORED TO ITS ORIGINAL CONDITION AT NO ADDITIONAL COST TO THE OWNER.
- IN AREAS WHERE EXISTING PAVEMENTS ARE REMOVED AND ARE PROPOSED AS LAWN, THE CONTRACTOR SHALL REMOVE THE PAVEMENT AND BASE, PROVIDE FILL AND 6" TOPSOIL PRIOR TO SEEDING.



PLANT SCHEDULE

KEY	QTY.	BOTANICAL NAME	COMMON NAME	SIZE	SPACING	COMMENTS
TREES						
AGA	4	AMELANCHIER X GRANDIFLORA 'AUTUMN BRILLIANCE'	AUTUMN BRILLIANCE SERVICEBERRY	10-12'		MULTI-STEM
ARA	2	ACER RUBRUM 'AUTUMN BLAZE'	AUTUMN BLAZE RED MAPLE	2.5" CAL.		
GBP	3	GINKGO BILOBA 'PRINCETON SENTRY'	PRINCETON SENTRY GINKGO	2.5" CAL.		
GTS	3	GLEDITSIA TRIACANTHOS F. INERMIS 'SHADEMASTER'	SHADEMASTER HONEYLOCUST	2.5" CAL.		
JUV	1	JUNIPERUS VIRGINIANA 'CANAERTII'	EASTERN RED CEDAR	8' B&B		
MAV	2	MAGNOLIA VIRGINIANA	SWEETBAY MAGNOLIA	8' B&B		
OSV	2	OSTRYA VIRGINIANA	AMERICAN HOPHORNBEAM	2" CAL.		
PPF	4	PICEA PUNGENS 'FAT ALBERT'	FAT ALBERT COLORADO SPRUCE	8' B&B		
SHRUBS						
CAH	19	CORNUS ALBA 'IVORY HALO'	IVORY HALO REDTWIGGED DOGWOOD	3 GAL.	5'-0" O.C.	
HQP	5	HYDRANGEA QUERCIFOLIA 'PEEWEE'	PEEWEE OAKLEAF HYDRANGEA	3 GAL.	4'-0" O.C.	
HQS	6	HYDRANGEA QUERCIFOLIA 'SNOW QUEEN'	SNOW QUEEN OAKLEAF HYDRANGEA	5 GAL.	5'-0" O.C.	
HYP	16	HYPERICUM PROLIFICUM	SHRUBBY ST. JOHN'S WORT	3 GAL.	3'-0" O.C.	
ILC	5	ILEX 'CENTENNIAL GIRL'	CENTENNIAL GIRL HOLLY	5 GAL.	6'-0" O.C.	
IMB	1	ILEX X MESERVEAE 'BLUE PRINCE'	BLUE PRINCE HOLLY	5 GAL.	6'-0" O.C.	
JCB	29	JUNIPERUS CONFERTA 'BLUE PACIFIC'	BLUE PACIFIC SHORE JUNIPER	3 GAL.	4'-0" O.C.	
JVG	16	JUNIPERUS VIRGINIANA 'GREY OWL'	GREY OWL JUNIPER	3 GAL.	4'-0" O.C.	
MYP	9	MYRICA PENNSYLVANICA	NORTHERN BAYBERRY	5 GAL.	6'-0" O.C.	
RAR	39	RHUS AROMATICA 'GRO-LOW'	GROW LOW FRAGRANT SUMAC	3 GAL.	4'-0" O.C.	
VIR	5	VIBURNUM RHYTIDOPHYLLUM	LEATHERLEAF VIBURNUM	5 GAL.	6'-0" O.C.	
PERENNIALS						
cak	61	CALAMAGROSTIS X ACUTIFLORA 'KARL FOERSTER'	KARL FOERSTER GRASS	1 GAL.	24" O.C.	
heh	29	HEMEROCALLIS 'HAPPY RETURNS'	HAPPY RETURNS DAYLILY	1 GAL.	24" O.C.	
her	29	HEMEROCALLIS 'ROSY RETURNS'	ROSY RETURNS DAYLILY	1 GAL.	24" O.C.	
nep	130	NEPETA X FAASSENII 'PURRSIAN BLUE'	PURRSIAN BLUE CATMINT	1 GAL.	24" O.C.	
pvh	38	PANICUM VIRGATUM 'HEAVY METAL'	HEAVY METAL SWITCHGRASS	1 GAL.	24" O.C.	
pah	176	PENNISETUM ALOPECUROIDES 'HAMELN'	DWARF FOUNTAIN GRASS	1 GAL.	24" O.C.	
pad	34	PEROVSKIA ATRIPLICIFOLIA 'DENIM N LACE'	DENIM AND LACE RUSSIAN SAGE	1 GAL.	30" O.C.	
ssa	60	SEDUM SPECTABILE 'AUTUMN JOY'	AUTUMN JOY SEDUM	1 GAL.	24" O.C.	

REVISIONS

NO.	DATE	DESCRIPTION	BY	CHK
1	2/25/2022	Schematic Design	TAH	
2	2/10/2022	2/10/2022	TAH	

