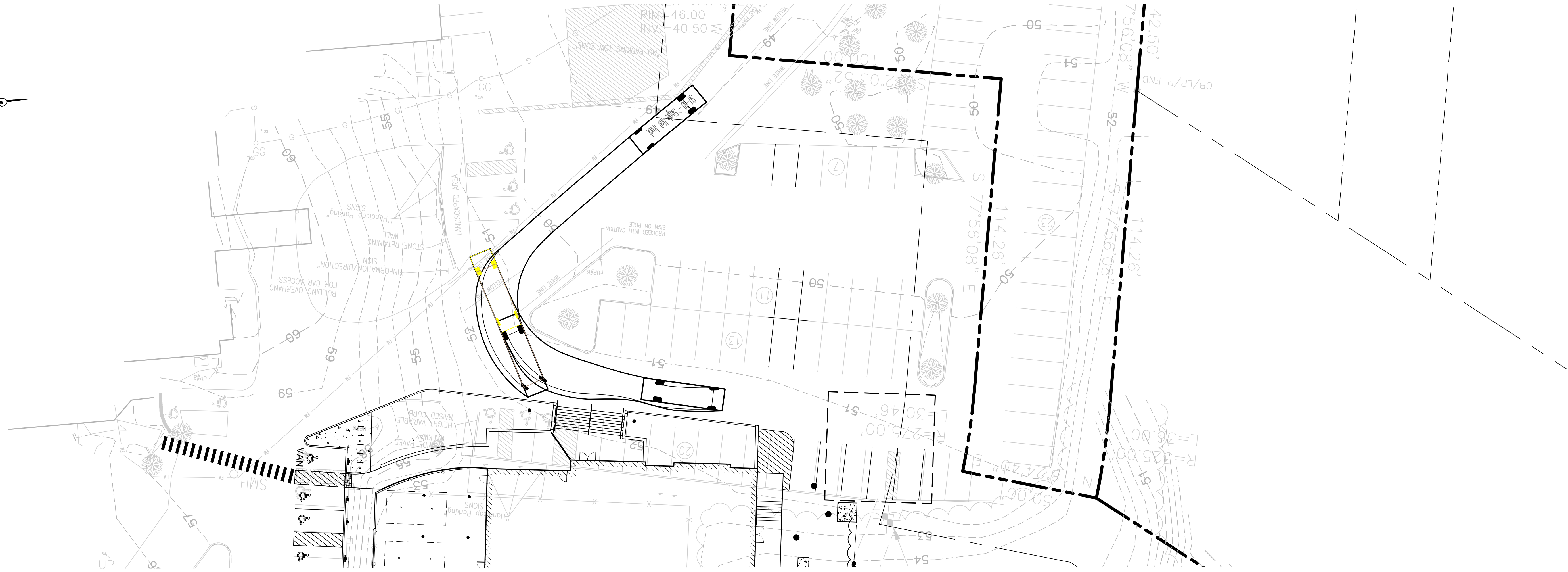
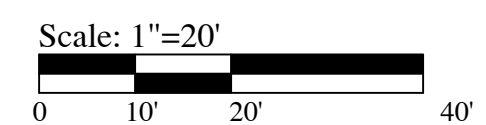
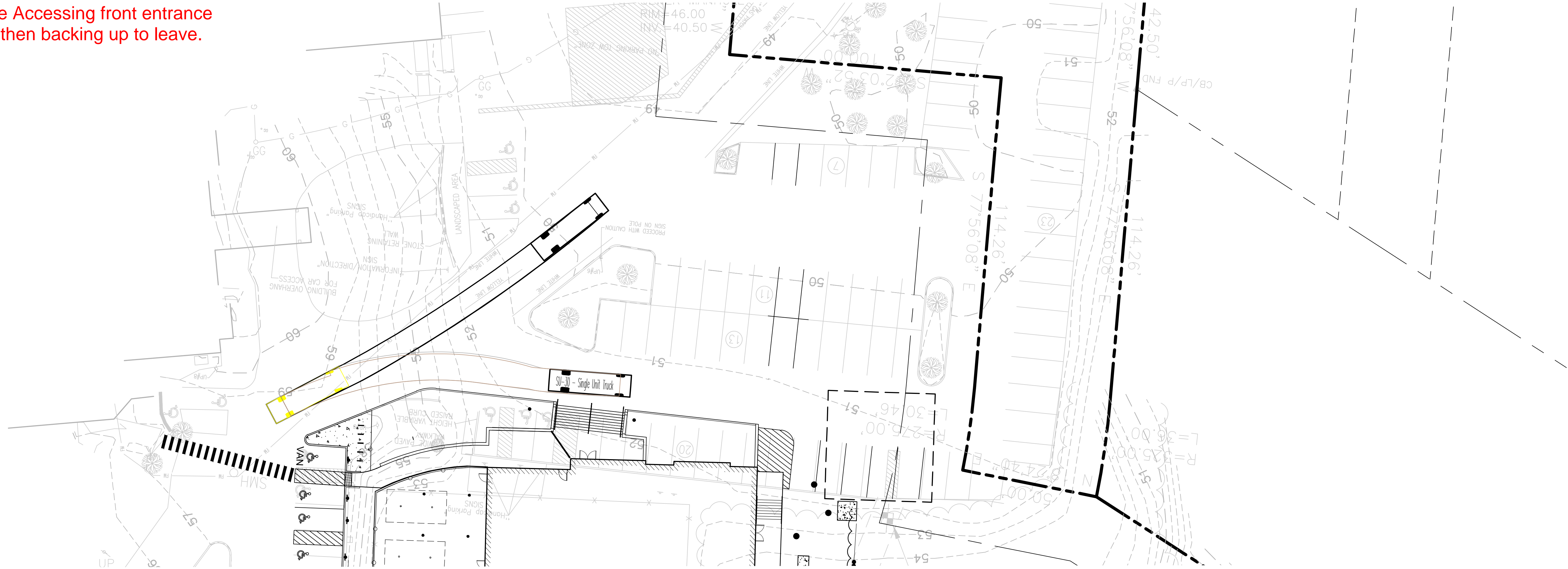


SU-30 - ENTERING

Rescue Vehicle Accessing front entrance
straight in and then backing up to leave.



SU-30 - DEPARTING



DRAWING NUMBER	DRAWING	VEHICLE TURNING MOVEMENTS	PROJECT	Outdoor Pool Complex		274 South Street, Hingham MA	STAMP	PROJECT TEAM	CIVIL ENGINEERING	LANDSCAPE ARCHITECTURE
				Pare Corporation 10 Lincoln Road, Suite 210 Foboro, MA 02035	KZLA 38 Bromfield Street, Suite 202 Boston, MA 02108					
DRAWING INFO	DATE OF ISSUE	3/17/2022	REVISIONS						STRUCTURAL ENGINEER	MECHANICAL ENGINEER
	SUBMISSION	Permitting							Simpson Gumpertz & Heger 480 Totten Pond Road Waltham, MA 02451	Seaman Engineering Corp. 22 West Street, Unit C Millsbury, MA 01527
	PROJECT #	21005.01								
	FILENAME	SSCC - Maintenance.rvt								
	SCALE	1" = 20'								
	DRAWN BY	AWB								

RMD COLLABORATIVE

ROTTI MCGRODDY DESIGN COLLABORATIVE LLC
685 Centre Street Jamaica Plain, MA 02130
617.533.2331
INFO@RMDCOLLABORATIVE.COM

CX.X