

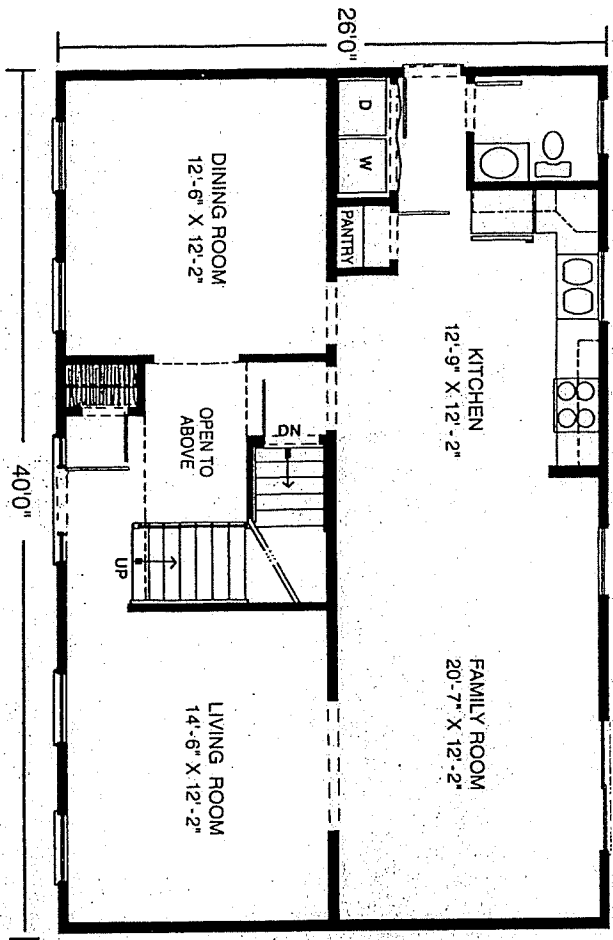
The Windsor

26' x 40' • 2080 Sq. Ft.

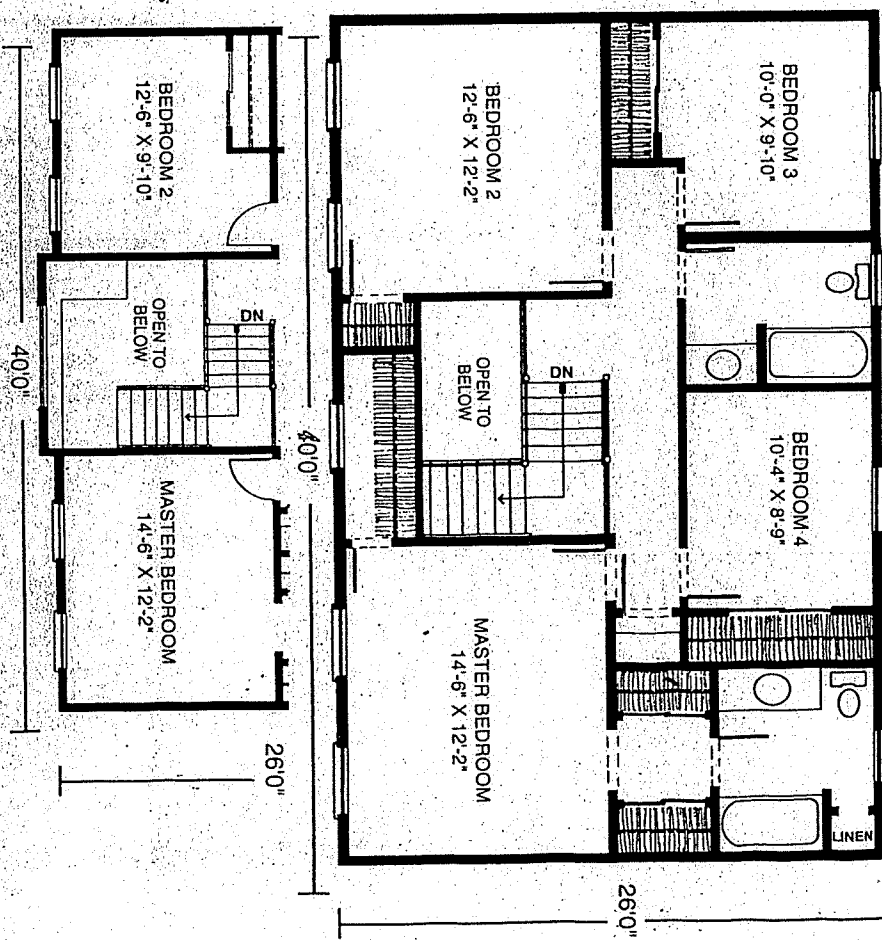
WESTCHESTER MODULAR HOMES



First Floor



Second Floor



Floor plan to the right accommodates optional elevation.

Standard Windsor Features

- 4 Spacious Bedrooms
- 2 1/2 Baths
- Open Two-Story Entry Foyer
- Formal Dining Room
- Spacious Country Kitchen with Pantry
- 3056 "Collage Style" Lower Level Windows with Architraves
- Framingham Pediment on Front Door
- Fireplace Options Available
- "Boxed-Out" and "Angle-Bay" Options Available
- Consult an Authorized Westchester Builder for a Complete List of Options
- Artist's renderings and Floor Plan Dimensions are approximate. All specifications must be written in the Contract. No oral conditions.



We Build Green!



WESTCHESTER MODULAR HOMES, INC.

AN EMPLOYEE OWNED COMPANY
 30 Reagans Mill Rd. • Wingdale, New York 12594
 (800) 832-3888 • (845) 832-9400
 www.westchestermodular.com