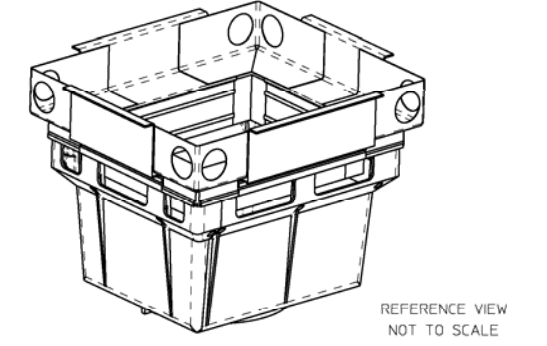
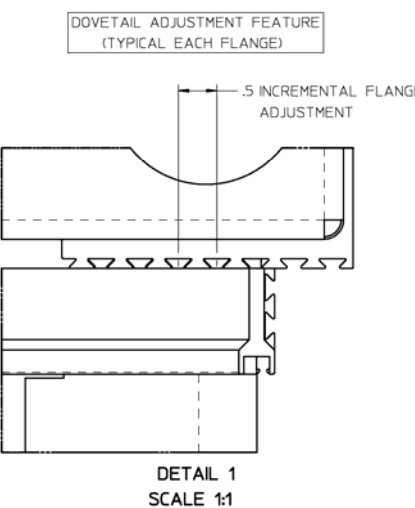
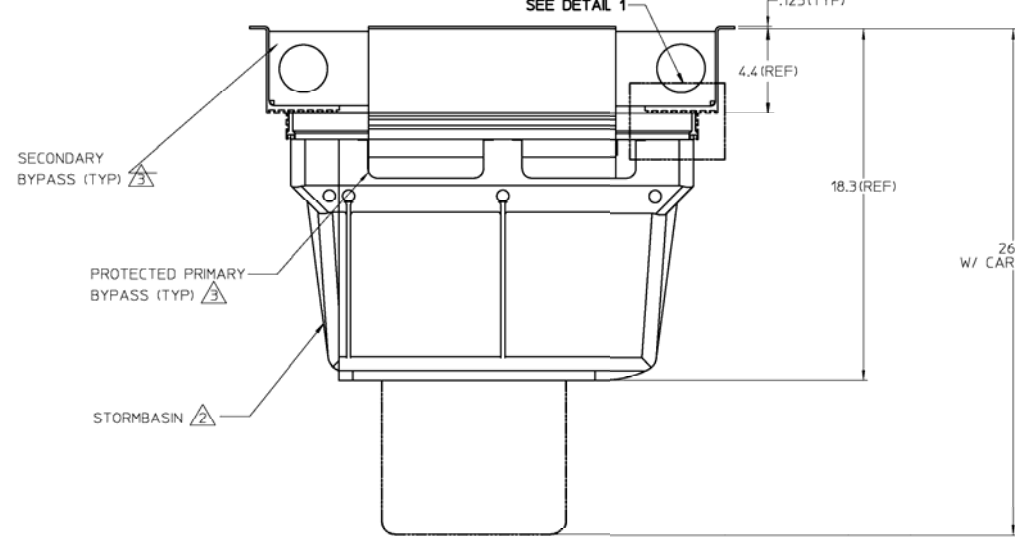
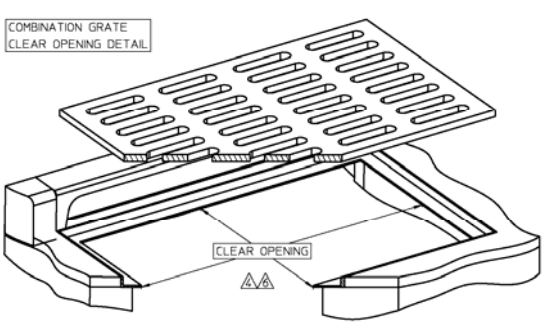
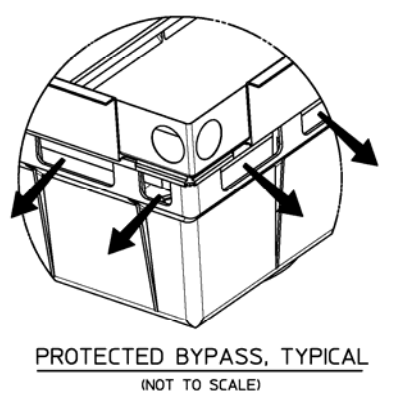
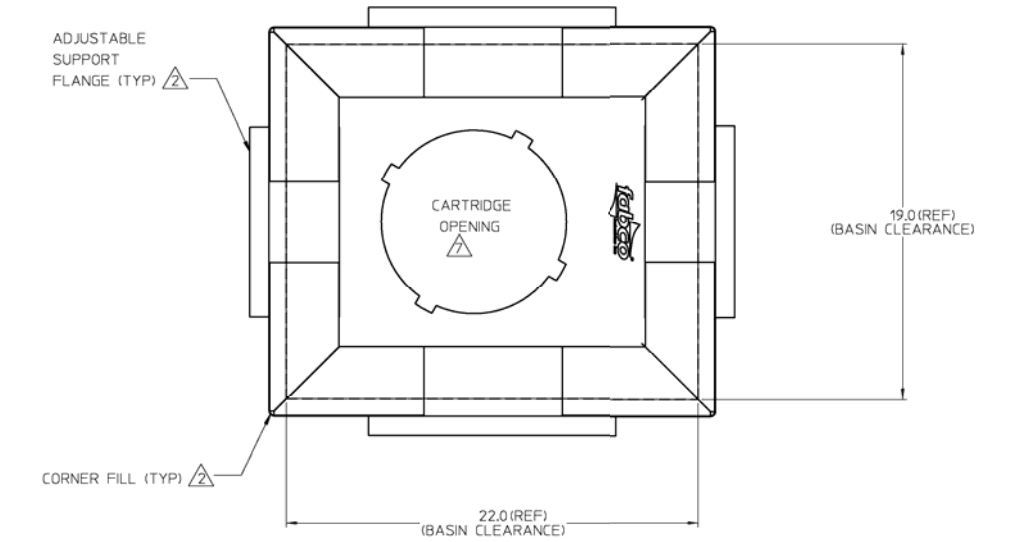
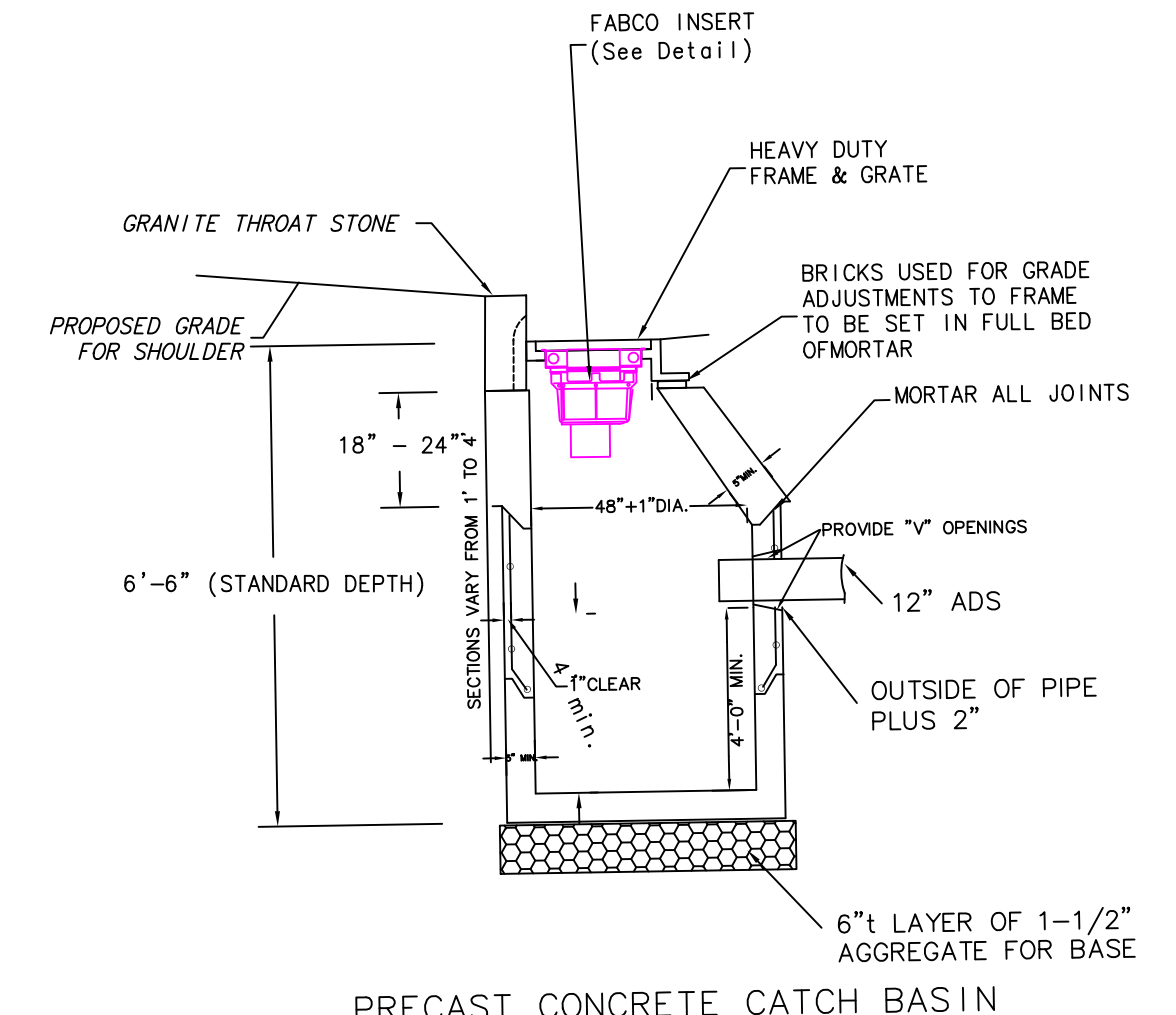
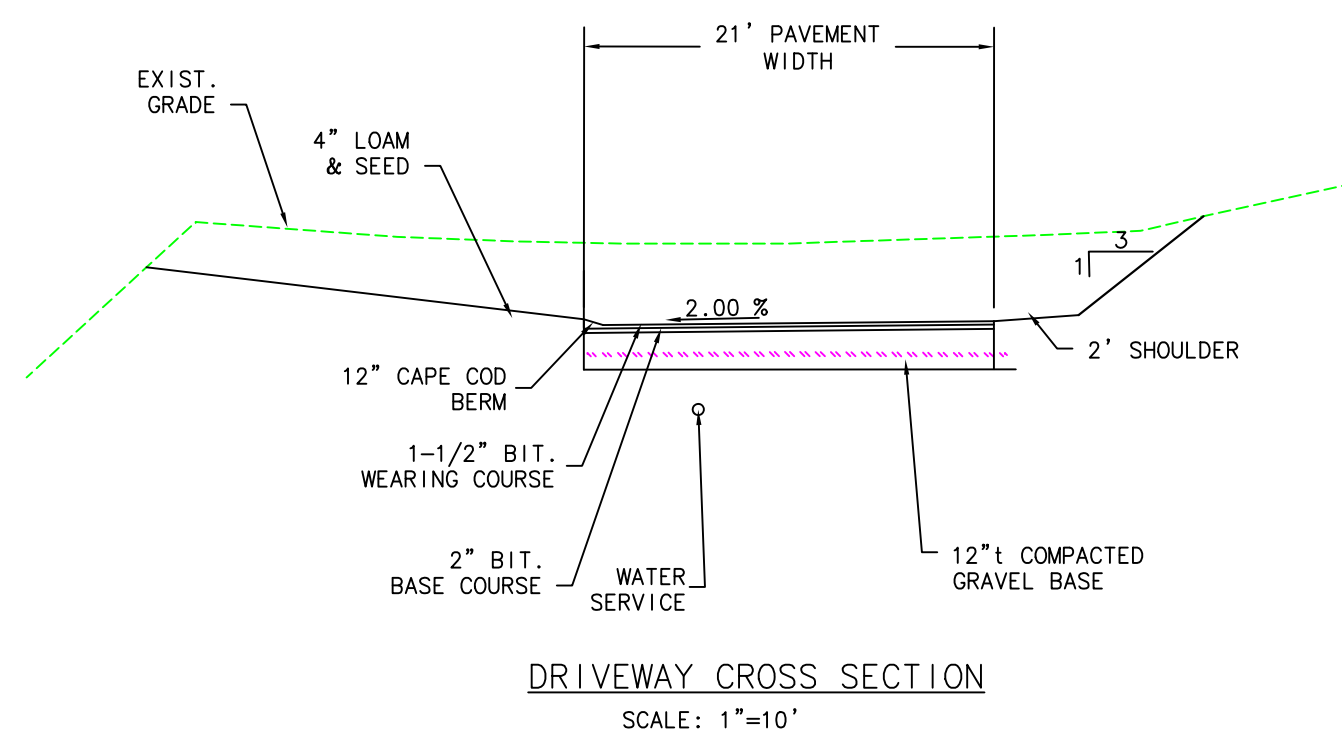
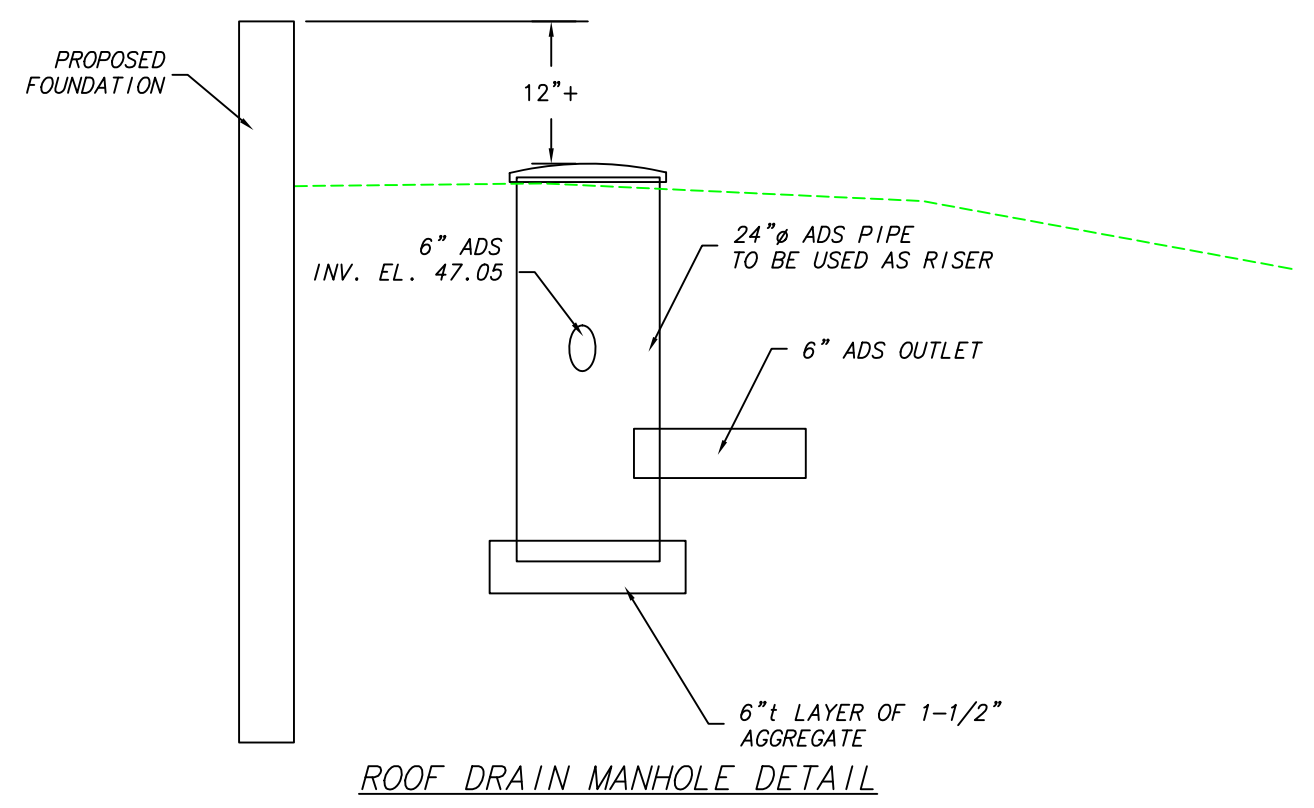


- NOTES:
1. WEIGHT (EMPTY): 25 LB MAX. NO CARTRIDGES
  2. MATERIAL:
    - A) ADJUSTABLE FLANGE AND DEFLECTOR: ALUMINUM ALLOY 6063-T6
    - B) BASIN: PLASTIC POLYPROPYLENE POLYETHYLENE COPOLYMER
    - C) CORNER FILL: ALUMINUM ALLOY 5052 H32
    - D) SUPPORT HARDWARE: CHS 300 SERIES
  3. PERFORMANCE CHARACTERISTICS (TYP):
    - A) DESIGN CAPACITY: 2.2 GPM
    - B) F1 TYPED FLOW RATE (EPA STANDARD CARTRIDGE): 115 GPM (25 CFS)
    - C) PRIMARY BYPASS FLOW RATE: 103 GPM (24 CFS)
    - D) SECONDARY BYPASS FLOW RATE: 328 GPM (7.3 CFS)
    - E) TOTAL BYPASS FLOW RATE: 501 GPM (11.1 CFS)
  4. CLEAR OPENING RANGE: 0.3 INCH INCREMENTS:
    - A) MINIMUM SIZE: 19.0 X 23.0
    - B) MAXIMUM SIZE: 24.0 X 27.0
  5. RECOMMENDED MINIMUM VAULT DEPTH: 2-IN BELOW CARTRIDGE
  6. TYPICAL INSTALLATION: REMOVE STORM GRATE. MEASURE CATCH BASIN FRAME CLEAR OPENING AND ADJUST FLANGES TO REST ON GRATE SUPPORT LEDGE. INSTALL STORMBASK INSIDE AND VERIFY THE ADJUSTABLE FLANGES ARE SECURELY RESTING ON THE GRATE SUPPORT LEDGES. INSTALL CORNER FILLER PIECES. REINSTALL THE STORM GRATE DIRECTLY ON THE STORMBASK SUPPORT FLANGES.
  7. USE ONLY WITH FABCO REPLACEABLE MEDIA CARTRIDGES.



NO.	QTY	PART NUMBER	DESCRIPTION	REMARKS
ALL OF MATERIALS				
1	1	19251TYP	ADJUSTABLE FLANGE AND DEFLECTOR	
2	1	2301REF	BASIN CLEARANCE	
3	1	1931REF	CORNER FILL	
4	1	1933REF	STORMBASK	
5	1	1934REF	STORM GRATE	



- NOTES:
1. DETAILS NOT INDICATED ABOVE ARE TO BE SIMILAR TO THOSE SHOWN ON M.D.P.W. STD. 201.20, 201.3.0
  2. FACE OF PIPE FLUSH OR NOT TO PROJECT MORE THAN 4" FROM FACE OF WALL ALONG CENTERLINE OF PIPE.
  3. FOR DESCRIPTION, MATERIAL AND CONSTRUCTION METHOD, SEE SPECIFICATIONS.

**OWNER**  
 TRUSTEES OF THE HINGHAM AFFORDABLE HOUSING TRUST  
 TOWN OFFICES  
 210 CENTRAL STREET  
 HINGHAM, MA 02043

**APPLICANT**  
 SOUTH SHORE HABITAT FOR HUMANITY  
 20 MATHESON DRIVE  
 WEYMOUTH, MA 02189

DETAIL SHEET  
 FOR  
 PROPOSED DWELLINGS  
 302-304 WHITING STREET  
 HINGHAM, MASS.  
 SCALE: 1"=20' DATE: NOVEMBER 24, 2019

NO.	DATE	DESCRIPTION	BY
1	02/10/20	Response to comments	GDJ

